

Falmouth Yacht Club
2020 Sailing Instructions



1 - RULES

All Falmouth Yacht Club races will be governed by the rules as defined in the current version of *The Racing Rules of Sailing* (RRS).

All racing activity will comply with restrictions associated with “Social Distancing” as applicable based on State of Massachusetts, Town of Falmouth and Falmouth Yacht Club regulations.

Additional restrictions related to “Social Distancing” are as follows:

1. No more than 3 adults per Sonar (18+ years old).
2. Cut-down sails, as designed by Jud Smith of Doyle Sails, will be used by all vessels during all races through the July Series. If a change is made for August 2020, it will be reflected in revised SI's.
3. No spinnakers will be used during the 2020 season.
4. No races will be started after the PRO observes sustained wind speeds exceeding 15 kts (as measured at the Signal Boat) or if the PRO deems conditions unsafe for racing.

2 - ENTRIES

Boats declared eligible by the Falmouth Yacht Club race committee may be entered by completing registration as described in the NOR.

3 - NOTICES TO COMPETITORS

Notices to competitors will be posted on the RC bulletin board, located downstairs in the Falmouth Yacht Club and posted on the Falmouth Yacht club website.

4 - CHANGES IN THE SAILING INSTRUCTIONS

Any change in the sailing instructions will be posted before 0900 on the day it will take effect, except that any change in the schedule of races will be posted by 2000 on the day before it will take effect.

The Race Committee may change the sailing instructions on the water by hoisting code flag “L” and notifying each boat of the change.

5 - SIGNALS MADE ASHORE

Signals made ashore will be displayed at the Falmouth Yacht Club Yardarm. When flag 'AP' is displayed ashore, '1 minute' is replaced with 'not less than 30 minutes' in race signal AP.

6 - SCHEDULE OF RACES

The first warning for all races shall be at 1300. Three races will be sailed if conditions permit. Dates are posted on Attachment C

At the conclusion of each race, all boats should remain within hailing distance of the race committee boat. The next race will be conducted on a back to back basis at the discretion of the race committee in the same time sequence as the first race.

7 - CLASS FLAGS

The Sonar class symbol on a white background is the class flag. Numerical pennant 1 is the alternate.

8 - RACING AREA

Attachment 'A' shows the location of racing areas.

9 - THE COURSE

Option 1 courses will utilize only portable marks.

The diagrams in Attachment "B" with identifying letters below show the basic courses, including the approximate angle between legs, the order in which marks are to be passed, and the side on which each mark is to be left.

W - Windward, leeward

D - Windward, leeward with start and finish in middle of leg

T - Triangle

M - Triangle with start and finish in middle of leg

Courses W, D, T, and M may be modified by additional legs, additional times around the course or combination thereof. When one of the basic courses is to be modified, the course posting will show numerically the additional laps or additional legs to be sailed (e.g. W1.5, D2, O2).

The course shall be sailed leaving all marks to port unless a green flag is flown from the race committee boat. When a green flag is flown from the race committee boat, the course shall be sailed leaving all marks to starboard.

The approximate distance of the first leg may be displayed from the race committee boat. Failure of approximate distance being posted will not be grounds for redress. This changes rule 62.1(a).

When courses 'W' or 'D' are sailed and the race committee boat flies signal flag W, an "offset mark" may be used at the windward mark. When used, the offset mark will be located approximately 75 to 200 feet to the side of the weather mark and shall be honored as

a mark of the course.

Option 2 courses will utilize government marks and may include portable marks

The Race Committee will designate option 2 by displaying code flag “Q” on the Race Committee boat.

The marks with identifying letters are shown below.

A	Portable Mark	N	Vineyard Haven RW “NW” Bell
B	Portable Mark	Q	Allegheny Rock Can “25”
F	Green Pond Nun “14”	R	Nobska Nun “18”
G	L’Hommedieu Shoal Can “15”	V	Eel Pond RW Nun “EP”
H	Shoal Can “17”	W	Waquoit Bay R “2” Bell
I	Shoal RG Nun	X	Portable Mark used as starting line mark.
J	L’Hommedieu Shoal Can “11”	Y	Portable Mark used as starting line mark.
K	Hedge Fence RG Nun	Z	Portable Mark. Location to be identified by magnetic compass bearing and distance relative to starting mark.
L	Nobska R “26” Bell		

The order in which marks are to be rounded or passed is identified by reading the identifying letters from top to bottom.

The course shall be sailed leaving all marks to port unless a green flag is flown from the race committee boat. The course shall be sailed leaving all marks to starboard when a green flag is flown from the race committee boat.

10 - AREAS THAT ARE OBSTRUCTIONS

Any areas marked by swimming area markers and the imaginary straight line connecting swimming area markers are designated as obstructions.

10-MARKS

Marks for Option one shall be as follows:

Windward- Orange Tet

Reach- Orange Tet

Start- Green Tet

Change- Yellow Tet

Leeward mark for course D will be Orange Tet

11 - THE START

The starting line will be between a staff or halyard displaying an orange flag or shape on a race committee boat and the nearby mark.

Boats whose warning signal has not been made shall avoid the starting area.

12 - CHANGE OF THE NEXT LEG OF THE COURSE

To change the next leg of the course, the race committee will move the original mark or lay a new mark. When the race committee lays a new mark, it will remove the original mark as soon as practicable.

13 - THE FINISH

Except when shortening the course, the finishing line will be between a staff or halyard displaying an orange flag or shape on a race committee boat and the nearby finishing mark.

14 - PENALTIES

The first two sentences of rule 44.1 are modified so that “One Turn Penalty” replaces “Two Turn Penalty”.

15 - TIME LIMITS

If no boat has passed Mark 1 within 30 minutes, the race will be abandoned. If no boat has finished before 1.5 hours, the race will be abandoned.

Boats failing to finish within 30 minutes after the first boat sails the course and finishes will be scored points for the finishing place two more than the number of boats that finished the race. This changes rule 35 and A4.

16 - PROTESTS AND REQUESTS FOR REDRESS

Protests shall be written on US Sailing Protest Forms or on forms available at the FYC office. Protests shall be delivered there within the protest time limit.

The protest time limit is 60 minutes after the race committee boat returns to shore.

Notices will be posted within 30 minutes of the protest time limit to inform competitors of hearings in which they are parties or named as witnesses. Hearings will be generally be held on the first Sunday at 1800 hours that is closest to the race where the protest was lodged and

will be heard in approximately the order of receipt

Notices of protests by the race committee or protest committee will be posted to inform boats under rule 61.1(b).

Breaches of instructions 11.3, 17, 21 will not be grounds for a protest by a boat. This changes rule 60.1(a). Penalties for these breaches may be less than disqualification if the protest committee so decides.

The Falmouth Yacht Club protest committee consists of a senior protest committee and subcommittees appointed for each race. A party to a hearing that believes that a subcommittee has made an error may, within 15 days of receiving the written decision of the subcommittee, ask the protest committee to reopen the hearing. In this case, the senior protest committee will consider the request. This changes Rule 66.

On the last day of the regatta a request for a reopening of a hearing shall be delivered within the protest time limit if the party requesting reopening was informed of the decision on the previous day, or no later than 30 minutes after the party requesting reopening was informed of the decision on that day. This changes rule 66.

17 - SCORING

Two or more boats must start a race in order for the race to be scored. The Low Point scoring system of RRS Appendix A will apply unless a fleet has registered an alternative with the race committee prior to the start of the racing season and the race committee has posted this on the RC bulletin board board.

For a series that is held over a period of time longer than a weekend or a regatta, a boat that does not come to the starting area for one or more races shall be scored points for the finishing place two more than the maximum number of boats that came to the starting area for those races. This changes rule A9.

When scoring the FYC July Series and the FYC August Series for a boat, her worst scores shall be excluded as shown below. A boat's score for the Championship Series is the sum of her scores from the July and August Series, after excluding the worst scores. When scoring all other FYC multi-race events, no scores will be excluded.

12 or more races completed	- exclude 3 worst scores
10 – 11 races completed	- exclude 2 worst scores
8 – 9 races completed	- exclude 1 worst score
7 or fewer races completed	- no score excluded

18 - SAFETY REGULATIONS

A boat that retires from the race shall notify the race committee either before leaving the race course area or, if that is impossible, immediately after arriving ashore. Failure to notify the race committee in a timely manner may result in disqualification for the days racing.

19 - REPLACEMENT OF CREW OR EQUIPMENT

Substitution of competitors will be allowed without prior written approval of the race

committee. Substitution of damaged or lost equipment will be allowed without prior approval by the race committee.

20 - EQUIPMENT AND MEASUREMENT CHECKS

A boat or equipment may be inspected at any time for compliance with class rules and sailing instructions. On the water, a boat can be instructed by a race committee measurer to proceed immediately to a designated area for inspection.

21 - OFFICIAL BOATS

Official boats will be marked by flying a blue flag with the race committee emblem, by flying a yellow flag or by flying a yellow flag with the race committee emblem.

23 - SUPPORT BOATS

Team leaders, coaches and other support personnel shall stay outside areas where boats are racing from the time of the preparatory signal for the first class to start until all boats have finished or the race committee signals a postponement, general recall or abandonment.

24 - RADIO COMMUNICATION

It is strongly recommended that all Sonars carry VHF radios and monitor Channel 71, so that the Race Committee can communicate with them. During racing, sailors should not transmit on Channel 71 except to report withdrawal from racing or an emergency. Before the warning gun of any race, vessels may communicate with the race committee or each other. Use of mobile devices is prohibited, except for non-interactive tracking of vessel position.

25 – PRIZES

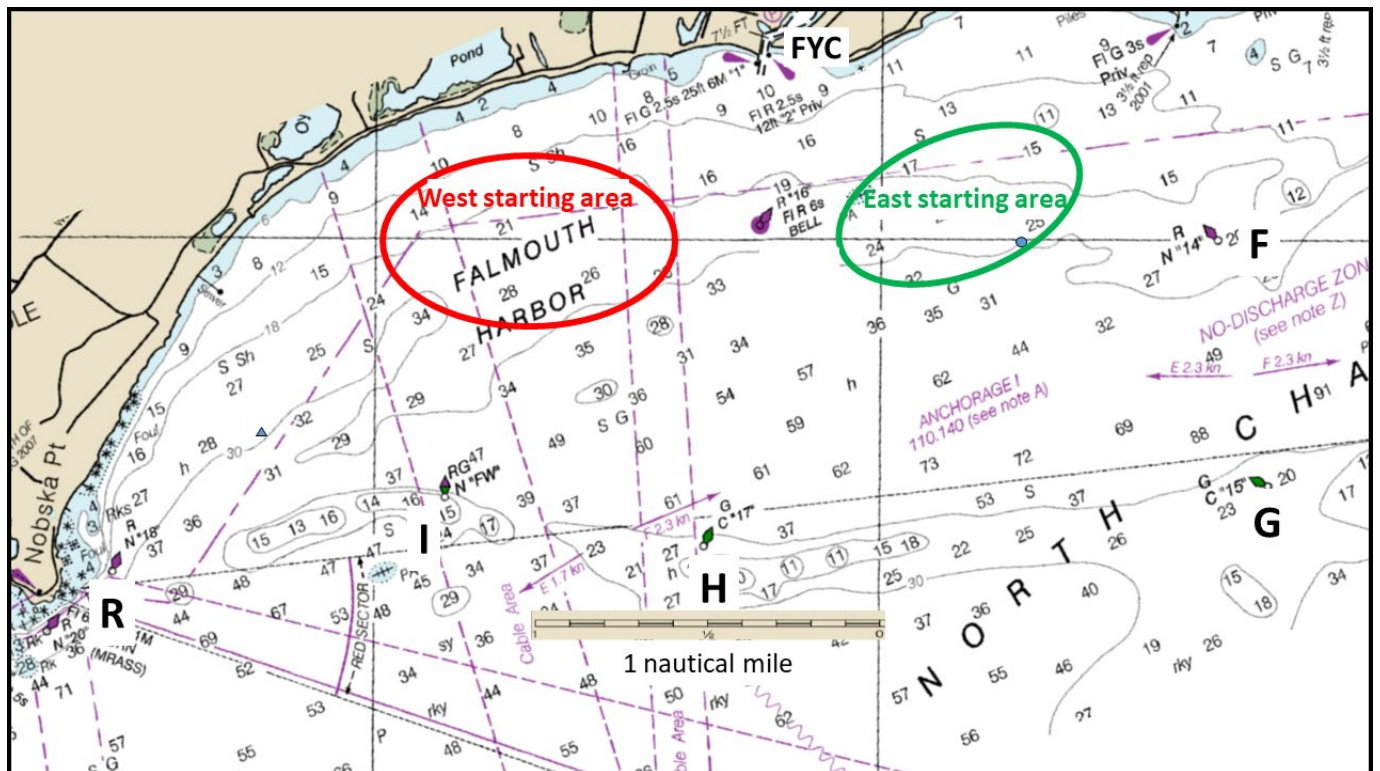
It is strongly recommended that all Sonars carry VHF radios and monitor Channel 71, so that Prizes will be awarded based on the number entries in each class: 2 or more, first place; 5 or more, second place; 8 or more, third place; 11 or more, fourth place; 15 or more, fifth place. No prizes shall be awarded for the July and August Series in a class that fails to complete more than 50% of the scheduled races. Exceptions may be granted for races cancelled because of weather.

26 - DISCLAIMER OF LIABILITY

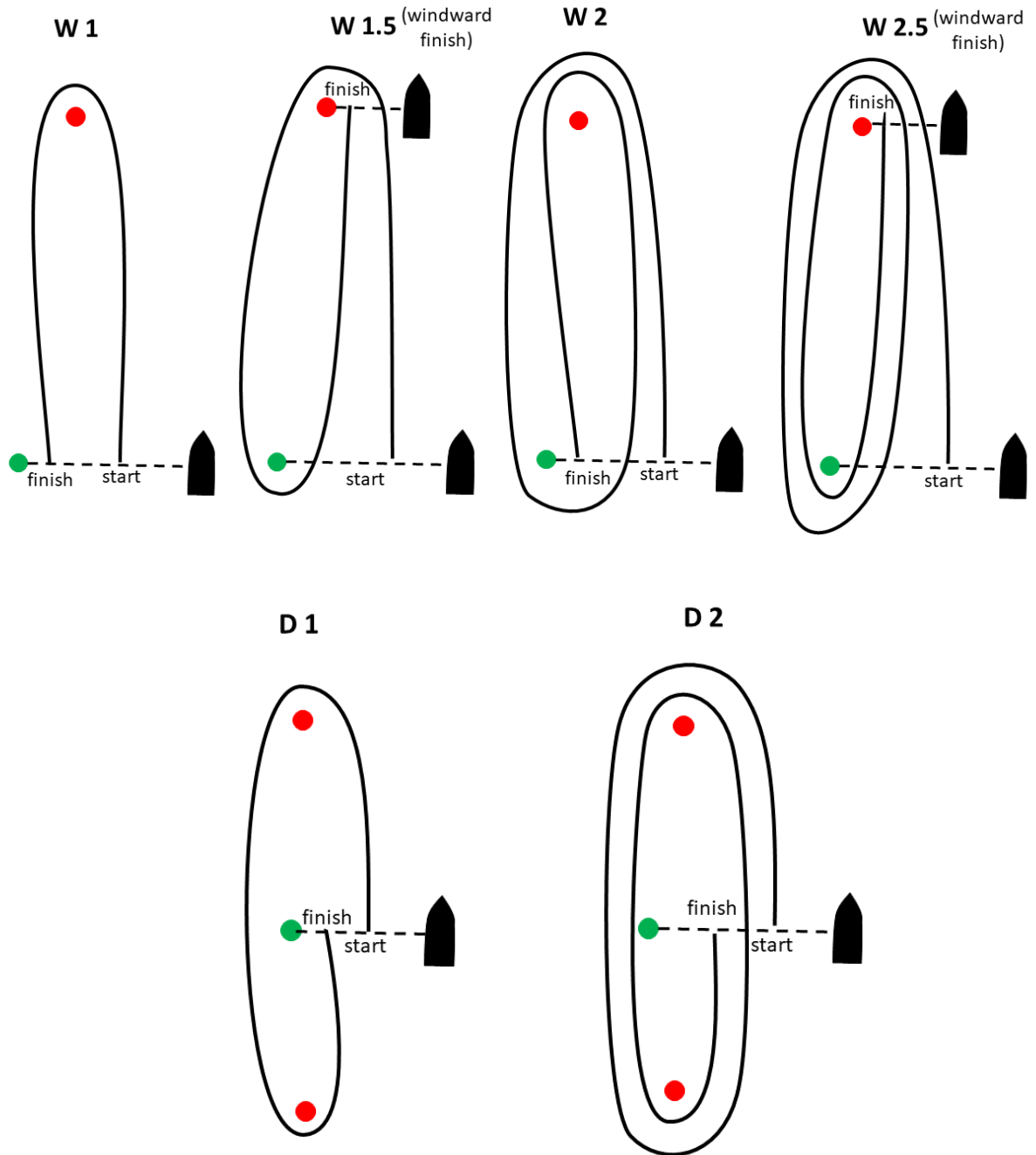
Competitors participate in the regatta entirely at their own risk. See rule 4, Decision to Race. The organizing authority will not accept any liability for material damage or personal injury or death sustained in conjunction with or prior to, during, or after the regatta.

Attachment A

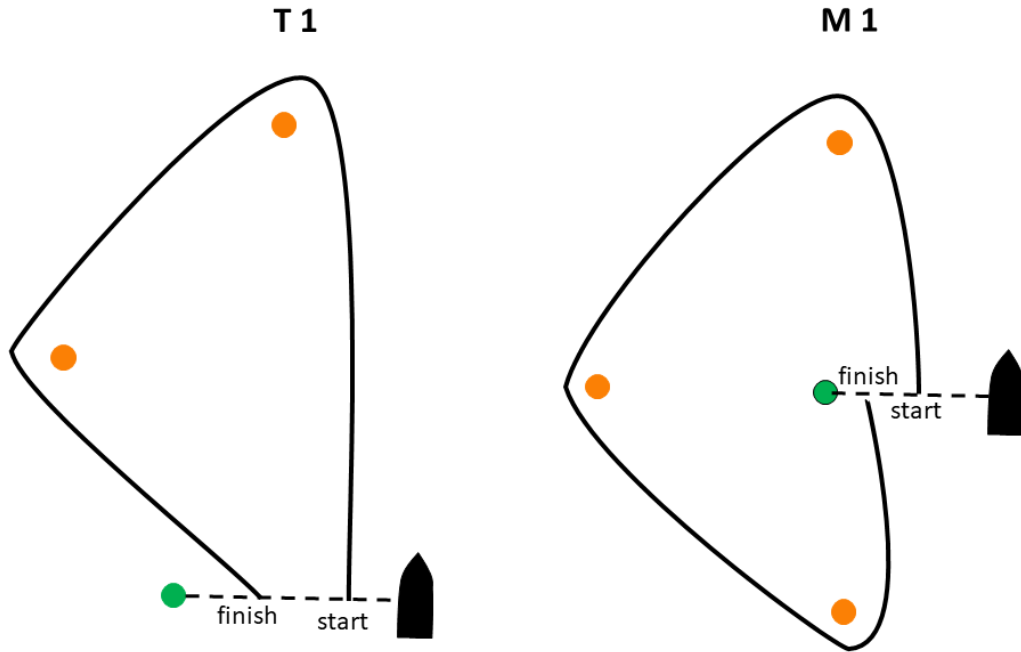
Government Marks



Attachment B—Course Diagrams (Part 1 of 2)



Attachment B—Course Diagrams (Part 2 of 2)



July

7/4 **Sat** **July Series – (3 races – 1300)**

TBD **Ryan Richards Trophy 3 RACE Series**

7/11 **Sat** **July Series – (3 races – 1300)**

7/18 **Sat** **July Series – (3 races – 1300)**

7/25 **Sat** **July Series – (3 races - 1300)**

8/1 **Sat** **July Series – (3 races - 1300)**

August Series

8/8 **Sat** **August Series – (3 races - 1300)**

8/10 **Sat** **August Series – (3 races - 1300)**

8/15 **Sat** **August Series – (3 races – 1300)**

8/22 **Sat** **August Series – (3 races - 1300)**

8/29 **Sat** **August Series – (3 races - 1300)**

9/5 **Sat** **Leland Trophy - (1 race -- 1300) plus 2 races August Series**

9/6 **Sun** **Awards Dinner (Open to all. Organized by the Sonar fleet)**